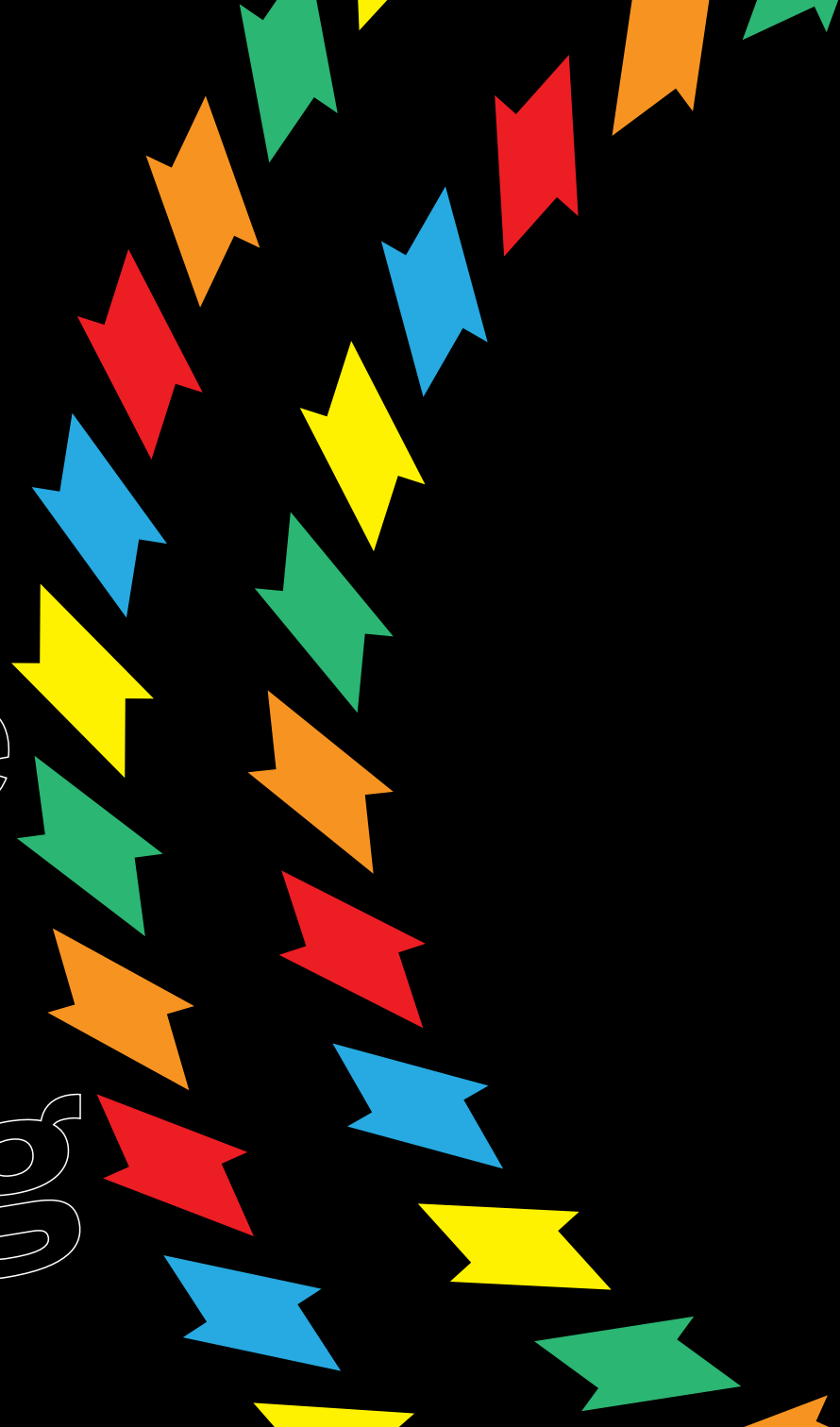


zleen

Bicycle  
Tire  
Catalog



## XC/MARATHON

TERRAIN	Mud	Rock	Loose	Gravel	Paved
XC/Marathon/Trail	Puma				
XC/Marathon/Trail		Tiger			
XC/Marathon/Trail			Lion		
XC/Marathon			Racerunner		
XC/Marathon			Panther		
XC/Marathon				Leopard	
XC/Marathon				Cheetah	
XC/Tour				Wildcat	
XC/Tour				Lynx	

## GRAVITY

TERRAIN	Mud	Rock	Hard	Gravel
DH/Enduro		Hawk		
AM/Trail		Tiger		
AM/Trail		Lion		
Enduro/Trail		Panther		
Enduro/Trail		Falcon		

## GRAVEL

TERRAIN	Loose	Gravel	Paved
Grassland	Wolf		
Universal		Dingo	
Woods		Coyote	

## ROAD

SURFACE	Smooth	Rough	
Race	Boa		
Competition		Taipan	

## CITY/TOUR

APPLICATION	Flat Paved	Light Trail	Cobblestone	Freight
Smooth Rider	Fly			
Smooth Performer		Rat		
Braking/Cornering		Dingo		
Allweather			Bumblebee	
Allweather Gravel		Jackal		
Heavy Duty			Hornet	

**Tiger**



**Lion**



**Panther**



**Leopard**



**Cheetah**



**Puma**



**Wildcat**



**Lynx**



**Racerunner**



**Hawk**



**Falcon**



**Lion**



**Tiger**



**Panther**



**Wolf**



**Coyote**



**Dingo**



**Boa**



**Taipan**



**Dingo**



**Jackal**



**Rat**



**Bumblebee**



**Hornet**



**Fly**



# zleen

ABOUT ZLEEN  
ZLEEN COMPOUNDS  
TECHNOLOGY AT ITS BEST  
**XC/MARATHON**  
ZLEEN RADICAL  
**GRAVITY**  
**GRAVEL**  
SEALANT PRO  
**ROAD**  
**CITY/TOUR**  
PRODUCT RANGE  
VALVE PRO  
**TUBES**

01  
03  
04  
**06**  
14  
**16**  
**22**  
27  
**28**  
**32**  
38  
41  
**42**

# Content



# Why Zleen?

## **50 years in business**

*Born in the Czech Republic, Zleen combines European engineering with 50 years of experience in tire manufacturing. Partnering with Ralson, India's largest bicycle tire producer, brings innovation and cutting-edge technology.*

## **Optimized Supply Chain**

*The distribution center in the Czech Republic efficiently serves all of Europe with 48-hour lead times. Direct factory shipments provide unique value for OEMs and other customers.*

## **Value proposition**

*High-performing products don't have to be expensive. The partnership with Ralson ensures affordable tires, and the local European team supports distributors and OEM partners.*

## **Aiming at carbon neutrality**

*Production in low carbon footprint regions. Our manufacturing base is generating all its steam needs from rice husk increasing the renewables usage way over 70%.*

## **Tough testing**

*Zleen won't settle for the average. We cooperate with top racers to test and develop the best tires.*

## **Technology at its best**

*Racing specs for professional riders, lightweight tires for bikees, tubeless rim-optimized beads, and innovative damage protection. Own compounding for high performance and low rolling resistance.*

## **Radical**

*Zleen introduces the first commercially available radial bicycle tire with a larger footprint and lower rolling resistance.*

## **Factory Race**

*Factory Race tires dedicated for professional riders combine low weight with high grip, ideal for top athletes.*

# **Big on ideas, obsessed with the little things.**

## **Manufacturing all about attention to detail**

*Using cutting-edge equipment others can only envy, we ensure precision at every step. From calendering that makes our 120 TPI casing ultra-thin, lightweight, and airtight, to accurate extrusion and laser-guided tire building, no detail is overlooked. Clean molds and strict quality control ensure each phase of production meets the highest standards.*

## **R&D and thorough testing**

*Zleen doesn't do average. In-house compounding with silica-based low rolling resistance and high-grip race compounds. Every single product undergoes thorough testing, including dynamic uniformity.*

## **Innovation**

*With its first genuine radial tire, Zleen leads the revolution in the bike industry. The unique design offers a 25% larger footprint at 70% higher inflation pressure — exactly what riders want. 40% lower rolling resistance and unmatched grip? Zleen makes the impossible possible.*

## **Zleen Compounding**

*At Zleen, our advanced compounds are engineered to meet precise performance demands across every cycling discipline. Whether it's race-grade grip and control, ultra-low rolling resistance for Road and Gravel, or long-lasting durability for daily commuting — we've got it covered. Our in-house testing facilities, combined with direct feedback from elite riders, drive the continuous refinement of our top-tier formulations. The result? High-performance compounds trusted by pros, embraced by enthusiasts, and built for every ride.*

# Application specific Zleen compounds.

## Soft Race Compound (SRC)

Engineered for peak performance, our SRC is a 47 ShA ultra-soft compound that delivers race-proven grip with a near “tire-to-ground” adhesive feel. It excels under extreme braking, aggressive cornering, and demanding climbs over steep or rocky terrain. Originally developed for Factory Race Elite tires, SRC now powers the Zleen Pro range — bringing elite-level traction to competitive riders everywhere.

## Dual Compound (DC)

Our Dual Compound (DC) technology combines a high-performance 57 ShA centerline compound with a softer 47 ShA shoulder, delivering the perfect balance of durability and grip. The soft edges provide exceptional traction at tight cornering, loose surfaces, and rocky or muddy terrains, while the centerline ensures extended tire life. This combination offers superior performance without sacrificing longevity, making it ideal for versatile riders.

## Silica Compound (SC)

Crafted for Pro-level performance, our 57 ShA enhanced silica blend strikes the perfect balance — delivering exceptional grip while minimizing rolling resistance on paved surfaces. Designed to boost speed without sacrificing control, SC is the go-to choice for road riders chasing peak efficiency and precision.

## Optimal Compound (O)

Purpose-built for city roads, touring, and daily commuting, the Optimal Compound delivers exceptional longevity with impressively low rolling resistance. Engineered for efficiency and durability, it keeps you moving mile after mile — reliably, smoothly, and with minimal wear.

## Classic Compound (C)

A trusted all-rounder, the Classic Compound offers reliable durability and consistent performance for everyday riding. Designed for versatility, it's the go-to choice for riders seeking a long-lasting, no-fuss solution across varied conditions and terrains.

## Highly Elastic (HE) & Reclaimed Compound (RC)

Designed as under-tread protection layers (2mm or 5mm) for city-grade tires, both HE and RC compounds defend against punctures where it matters most. The blue HE compound adds a 2 mm layer of resilience for the eReady specifications. Meanwhile, the 5mm green RC for the eReady 5 specifications delivers solid protection — perfect for durable, budget-conscious urban mobility.

## Radial Tire Construction

Zleen's Radical technology rewrites the rules. As the first true 88° radial bicycle tire, the Radical sets a new benchmark—delivering breakthrough performance riders will feel from the first ride — and never want to ride without. Detailed information on the page 14.



## DH — Downhill Spec

Engineered for extreme durability, the DH Downhill Spec features a dual-ply casing with an added body ply for maximum resistance to impacts and sidewall cuts. Paired with an additional Apex bead/sidewall insert, these tires are built to withstand sharp rocks and deep drops, providing unbeatable protection when tackling the toughest downhill trails. Trust the DH Spec to keep you safe through rugged descents and demanding terrain.



## Tubeless Ready (TR)

Zleen's Tubeless Ready (TR) casing is engineered for a flawless, airtight fit — thanks to precision-shaped beads and an optimized bead diameter that lock securely into the rim. Advanced calendering and a specialized compound dramatically reduce air permeability, ensuring lasting pressure retention. Just add a reliable dose of tire sealant to activate the tubeless setup. For peak performance, pair with Zleen Seal Pro tire milk, premium tubeless valves, and quality rim tape on access-hole rims.



## Bead-to-Bead (B2B) Fabric Reinforcement

Built for the toughest rides, our Bead-to-Bead (B2B) fabric layer envelops the entire casing — from bead to tread — creating a robust armor against cuts, punctures, snake bites, and impact damage. This full-coverage reinforcement is a hallmark of Zleen Pro tires, trusted by competitive riders for reliability across rugged terrain, rocky trails, and aggressive conditions.



## 120 TPI

The 120 TPI (threads per inch) casing offers a pro-level, high-tensile elastic construction designed for race-level performance. With a finer, denser fabric, this casing provides exceptional steering response and grip, adapting quickly to rugged surfaces during cornering and braking. At the same time, the 120 TPI ensures excellent grip during acceleration, making it the perfect choice for racers looking for ultimate control and performance.



## 60 TPI

Engineered for recreational riders and hobby athletes, our 60 TPI casing strikes the perfect balance between lightweight and durability. Deploying fine fabric and flexible skinwall construction, these tires deliver remarkably responsive ride. The specialized body ply compound, precision calendering, and tubeless bead design makes them tubeless-ready and reliably airtight — so you can focus on the ride, not the maintenance.



### Apex Sidewall Reinforcement

The Apex is a precision-engineered sidewall insert positioned just above the bead, reinforcing the tire where impacts hit hardest. Acting as a protective wedge, it guards against snake bites, rim flange cuts, and rock strikes. By shifting the flex point higher up the sidewall, the Apex enhances structural integrity — absorbing brutal hits during aggressive descents, steep drops, and downhill trail runs with full-load confidence.



### eReady

eReady tires are specifically built for e-bikes, featuring an extra 2mm under-tread layer (HE) for puncture resistance and enhanced durability. Designed to handle the additional weight, strong acceleration forces, and high braking performance of e-bikes, eReady tires ensure reliability and strength when carrying extra loads. The ideal choice for e-bike enthusiasts, providing both long-lasting performance and safety.



### eReady 5

The eReady 5 takes durability to the next level, featuring a 5mm under-tread compound (RC) designed to protect e-bike tires from punctures while improving efficiency. With its low rolling resistance, it reduces energy consumption, extending your battery life for longer rides. Perfect for freight applications, eReady 5 combines resilience with efficiency for those who demand the best from their e-bike tires.



### Aramid (A) & Reinforced Aramid (AR) Foldable Bead

The Aramid Foldable Bead features a high-tensile, advanced polyamide fiber that not only makes the tire lightweight and foldable but also enhances tubeless performance. Its flexible design combined with a precise bead shape delivers superior strength and durability. The Reinforced Aramid (AR) specification takes durability up a notch, offering enhanced safety especially in heavy-duty applications.



### HiVis Reflex

The HiVis Reflex sidewall strip offers the widest reflective area available, ensuring maximum light reflection and visibility in low-light conditions. This advanced reflective technology boosts your safety by making you more visible to others, even in the darkest environments. Ideal for riders who prioritize safety while cycling in dimly lit areas.



### Black Neon 10 mm Wide Reflective Tape

The Black Neon 10mm Wide Reflective Tape is a state-of-the-art design element that blends seamlessly with the tire during daylight, only to reveal its full safety potential at night. This nearly invisible tape reflects light in all directions (180°) when illuminated, providing maximum visibility and security during nighttime rides, making it an essential feature for riders who value both style and safety.





# zleen

## XC/MARATHON



Light casing for contest, soft compound and bead-to-bead protected for race. eReady optional. Zleen XC/Marathon and XC/Marathon Pro.

### XC/MARATHON

- 1 Aramid bead
- 2 60 TPI Skinwall casing
- 3 Dual compound 47/57 Sha



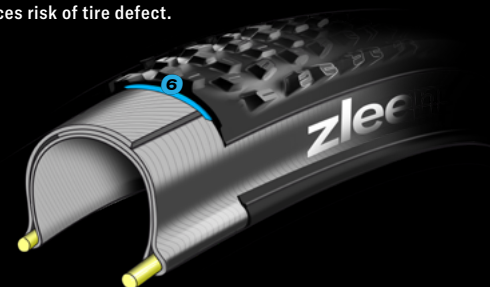
### XC/MARATHON Pro

- 1 Aramid bead
- 2 Tubeless Ready
- 3 120 TPI Skinwall casing
- 4 Bead-to-Bead impact damage guard
- 5 Soft race compound 47 Sha



### eReady

- 6 Ebike-optional eReady series feature backcountry optimized low rolling resistance 2mm under-tread puncture protection. Enables effortless freedom of exploration. Reduces risk of tire defect.



# Tiger



SIDEWALL COLORS  
⚡ BLACK

PAGE  
09

# Lion



SIDEWALL COLORS  
⚡ BLACK

PAGE  
09

# Panther



SIDEWALL COLORS  
⚡ BLACK

PAGE  
10

# Leopard



SIDEWALL COLORS  
⚡ BLACK ⚡ GREY ⚡ TAN

PAGE  
10

# Cheetah



SIDEWALL COLORS  
⚡ BLACK ⚡ GREY ⚡ TAN

PAGE  
11

# Puma



SIDEWALL COLORS  
⚡ BLACK

PAGE  
11

# Wildcat



SIDEWALL COLORS  
⚡ BLACK

PAGE  
12

# Lynx



SIDEWALL COLORS  
⚡ BLACK

PAGE  
12

# Racerunner



SIDEWALL COLORS  
⚡ BLACK

PAGE  
14



SIZE	METRIC	PATTERN	TPI	SEWALL	TR/TT	BEAD	PROTECTED	PP MATERIAL	IMPACT PROTECTED	TREAD COLOR	SEWALL COLOR	SPECIAL COMPOUND	INFLATION (kPa)	LOAD (kg)	WEIGHT (g)
29 x 2.45	62-622	<b>Panther</b>	120	Skinwall	TR	A			B2B	Black	Black	SRC	350	140	970
29 x 2.45	62-622	<b>Panther Race</b>	120	Skinwall	TR	A				Black	Black	SRC	350	140	860
29 x 2.45	62-622	<b>Panther</b>	120	Skinwall	TR	A	eReady	HE	B2B	Black	Black	O	350	140	1110
29 x 2.35	60-622	<b>Tiger</b>	120	Skinwall	TR	A			B2B	Black	Black	SRC	350	130	880
29 x 2.25	57-622	<b>Leopard</b>	120	Skinwall	TR	A			B2B	Black	Black	SRC	380	140	750
29 x 2.25	57-622	<b>Leopard</b>	120	Skinwall	TR	A			B2B	Black	Tan	SRC	380	140	750
29 x 2.25	57-622	<b>Leopard</b>	120	Skinwall	TR	A			B2B	Black	Grey	SRC	380	140	750
29 x 2.25	57-622	<b>Leopard Race</b>	120	Skinwall	TR	A				Black	Black	SRC	380	140	720
29 x 2.25	57-622	<b>Cheetah</b>	120	Skinwall	TR	A			B2B	Black	Black	SRC	380	140	750
29 x 2.25	57-622	<b>Cheetah</b>	120	Skinwall	TR	A			B2B	Black	Tan	SRC	380	140	750
29 x 2.25	57-622	<b>Cheetah</b>	120	Skinwall	TR	A			B2B	Black	Grey	SRC	380	140	750
29 x 2.25	57-622	<b>Cheetah Race</b>	120	Skinwall	TR	A				Black	Black	SRC	380	140	720
29 x 2.25 R	R 57-622	<b>Racerunner Radical</b>	120	Skinwall	TR	A	RB	PF	B2B	Black	Black	SRC	380	140	550
29 x 2.10	54-622	<b>Puma</b>	120	Skinwall	TR	A			B2B	Black	Black	SRC	380	140	680
29 x 2.10	54-622	<b>Puma Race</b>	120	Skinwall	TR	A				Black	Black	SRC	380	140	640
27.5 x 2.45	62-584	<b>Lion</b>	120	Skinwall	TR	A			B2B	Black	Black	SRC	350	135	880
27.5 x 2.45	62-584	<b>Panther</b>	120	Skinwall	TR	A			B2B	Black	Black	SRC	350	135	920
27.5 x 2.45	62-584	<b>Panther</b>	120	Skinwall	TR	A	eReady	HE	B2B	Black	Black	O	350	135	1040
27.5 x 2.35	60-584	<b>Lynx</b>	120	Skinwall	TR	A			B2B	Black	Black	SRC	350	130	795
27.5 x 2.35	60-584	<b>Lynx Race</b>	120	Skinwall	TR	A				Black	Black	SRC	350	130	750
27.5 x 2.25	57-584	<b>Leopard</b>	120	Skinwall	TR	A			B2B	Black	Black	SRC	380	135	710

XC/MARATHON Pro

29 x 2.45	62-622	<b>Panther</b>	60	Skinwall	TR	A				Black	Black	DC	350	140	890
29 x 2.45	62-622	<b>Panther</b>	60	Skinwall	TR	A	eReady	HE		Black	Black	O	350	140	1120
29 x 2.45	62-622	<b>Wildcat</b>	60	Skinwall	TT	A				Black	Black	O	350	140	890
29 x 2.35	60-622	<b>Tiger</b>	60	Skinwall	TR	A				Black	Black	DC	350	130	890
29 x 2.35	60-622	<b>Lynx</b>	60	Skinwall	TT	A				Black	Black	O	350	130	860
29 x 2.25	57-622	<b>Leopard</b>	60	Skinwall	TR	A				Black	Black	DC	380	140	760
29 x 2.25	57-622	<b>Cheetah</b>	60	Skinwall	TR	A				Black	Black	DC	380	140	760
29 x 2.25	57-622	<b>Lynx</b>	60	Skinwall	TT	A				Black	Black	O	315	140	810
29 x 2.10	54-622	<b>Lynx</b>	60	Skinwall	TT	A				Black	Black	O	400	125	770
29 x 2.10	54-622	<b>Wildcat</b>	60	Skinwall	TT	A				Black	Black	O	350	125	770
29 x 2.10	54-622	<b>Wildcat</b>	60	Skinwall	TT	TW	eReady	HE		Black	Black	O	350	125	910
27.5 x 2.45	62-584	<b>Lion</b>	60	Skinwall	TR	A				Black	Black	DC	350	135	890
27.5 x 2.45	62-584	<b>Panther</b>	60	Skinwall	TR	A				Black	Black	DC	350	135	890
27.5 x 2.45	62-584	<b>Panther</b>	60	Skinwall	TR	A	eReady	HE		Black	Black	O	350	135	1050
27.5 x 2.35	60-584	<b>Lynx</b>	60	Skinwall	TR	A				Black	Black	DC	350	130	810
27.5 x 2.25	57-584	<b>Leopard</b>	60	Skinwall	TR	A				Black	Black	DC	380	135	720
27.5 x 2.10	54-584	<b>Wildcat</b>	60	Skinwall	TT	A				Black	Black	O	400	120	750

XC/MARATHON



TT → Tube type   TR → Tubeless Ready   A → Aramid bead   B2B → Bead-to-Bead impact damage guard   HE → Highly elastic compound   DC → Dual compound  
 SRC → Soft Race compound   RB → Radial belt   PF → Polyamid Fabric   TW → Twisted steel wire   O → Optimal compound



# Tiger



## Rough XCM predator

- Roughest of the MTB range. Allmountain Trail crossover.
- Tiger's robust tread blocks and generous tread depth predetermine the tire for aggressive riding style on fast, tough, steep rocky mountain paths and muddy trails. Excellent for sharp cornering, quick speed variations, and short braking.

SIDEWALL COLORS ⚡ BLACK

### TERRAIN

Mud | Rock | Loose | Gravel | Paved

**Tiger**

XC/Marathon/Trail



## Tiger

- Aramid bead
- Tubeless Ready
- 60 TPI Skinwall casing
- Dual compound 57/47 ShA

### AVAILABLE SIZES

↗ 29 x 2.35

## Tiger Pro

- Aramid bead
- Tubeless Ready
- 120 TPI Skinwall casing
- Bead-to-Bead impact damage guard
- Soft race compound 47 ShA

### AVAILABLE SIZES

↗ 29 x 2.35

## GRAVITY Tiger

↗ 29 x 2.35 (Apex)

## GRAVITY Tiger Pro

↗ 29 x 2.35 (Apex)

# Lion



## King of XCM Trail

- Ideal for light trails.
- The Lion's deep tread ensures excellent grip on rocky grounds while providing perfect steering response in muddy terrains. Lower net to gross ratio guarantees excellent self-cleaning properties. Deep and robust shoulder blocks hold best at fast cornering and aggressive riding style. The Allmountain crossover.

SIDEWALL COLORS ⚡ BLACK

### TERRAIN

Mud | Rock | Loose | Gravel | Paved

**Lion**

XC/Marathon/Trail



## Lion

- Aramid bead
- Tubeless Ready
- 60 TPI Skinwall casing
- Dual compound 57/47 ShA

### AVAILABLE SIZES

↗ 27.5 x 2.45

## Lion Pro

- Aramid bead
- Tubeless Ready
- 120 TPI Skinwall casing
- Bead-to-Bead impact damage guard
- Soft race compound 47 ShA

### AVAILABLE SIZES

↗ 27.5 x 2.45

## GRAVITY Lion

↗ 27.5 x 2.45 (Apex)

## GRAVITY Lion Pro

↗ 27.5 x 2.45 (Apex)

# Panther



## Wide and black hard rock XCM mate

- The XC/Marathon Enduro Trail crossover.
- Straddled on the verge between Trail and Marathon. More aggressive than Leopard, making the Panther your best friend for harder and rockier surfaces. The dense and deep center rib ensures great grip. The elaborate shoulder blocks work best at cornering providing control and force to fast acceleration. The Allmountain crossover.

SIDEWALL COLORS ⚡ BLACK

### TERRAIN

Mud | Rock | Loose | Gravel | Paved

**Panther**

XC/Marathon

## Panther

- Aramid bead
- Tubeless Ready
- 60 TPI Skinwall casing
- Dual compound 57/47 ShA

### AVAILABLE SIZES

- ↗ 29 x 2.45
- ↗ 29 x 2.45 eReady
- ↗ 27.5 x 2.45
- ↗ 27.5 x 2.45 eReady

## Panther Pro

- Aramid bead
- Tubeless Ready
- 120 TPI Skinwall casing
- Bead-to-Bead impact damage guard
- Soft race compound 47 ShA

### AVAILABLE SIZES

- ↗ 29 x 2.45
- ↗ 29 x 2.45 eReady
- ↗ 27.5 x 2.45
- ↗ 27.5 x 2.45 eReady

## Panther Race

- Aramid bead
- Tubeless Ready
- 120 TPI Skinwall casing
- Soft race compound 47 ShA

### AVAILABLE SIZES

- ↗ 29 x 2.45

## GRAVITY Panther Pro

### AVAILABLE SIZES

- ↗ 29 x 2.45 (Apex)
- ↗ 27.5 x 2.45 (Apex)

# Leopard



## Slender and muscular XCM creature

- The true XC and Marathon allrounder.
- Elaborate tread design with semi-dense center blocks for an effortlessly smooth ride. Deep and robust shoulder knobs for sure grip pull and steering response. Dominating the hard and loose terrains while proving optimal for partly rocky and soft grounds.

SIDEWALL COLORS ⚡ BLACK ⚡ GREY ⚡ TAN

### TERRAIN

Mud | Rock | Loose | Gravel | Paved

**Leopard**

XC/Marathon

## Leopard

- Aramid bead
- Tubeless Ready
- 60 TPI Skinwall casing
- Dual compound 57/47 ShA

### AVAILABLE SIZES

- ↗ 29 x 2.25
- ↗ 27.5 x 2.25

## Leopard Pro

- Aramid bead
- Tubeless Ready
- 120 TPI Skinwall casing
- Bead-to-Bead impact damage guard
- Soft race compound 47 ShA

### AVAILABLE SIZES

- ↗ 29 x 2.25
- ↗ 29 x 2.25 ⚡
- ↗ 29 x 2.25 ⚡
- ↗ 27.5 x 2.25

## Leopard Race

- Aramid bead
- Tubeless Ready
- 120 TPI Skinwall casing
- Soft race compound 47 ShA

### AVAILABLE SIZES

- ↗ 29 x 2.25

# Cheetah



## Fast as the fastest XCM beast

- Marathon tire perfect for loose and soft terrain.
- Three rows of dense center tread blocks for low rolling resistance and smooth ride on gravel and paved paths. Medium high shoulder knobs for firm support at cornering and in soft terrain.

SIDEWALL COLORS ⚡ BLACK ⚡ GREY ⚡ TAN

### TERRAIN

Mud | Rock | Loose | Gravel | Paved

Cheetah

XC/Marathon



## Cheetah

- Aramid bead
- Tubeless Ready
- 60 TPI Skinwall casing
- Dual compound 57/47 ShA

### AVAILABLE SIZES

↗ 29 x 2.25

## Cheetah Pro

- Aramid bead
- Tubeless Ready
- 120 TPI Skinwall casing
- Bead-to-Bead impact damage guard
- Soft race compound 47 ShA

### AVAILABLE SIZES

↗ 29 x 2.25

↗ 29 x 2.25 ⚡

↗ 29 x 2.25 ⚡

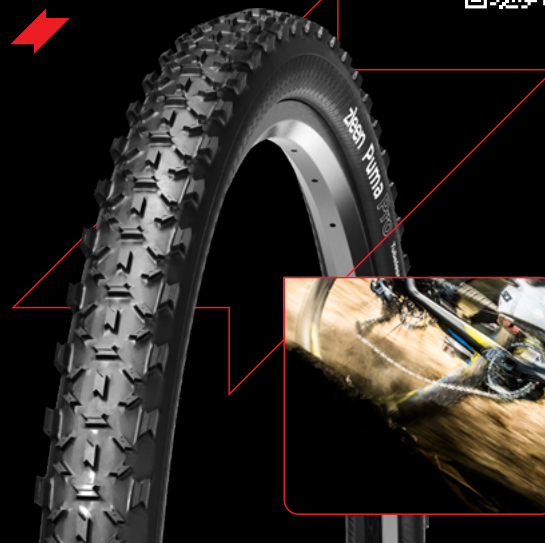
## Cheetah Race

- Aramid bead
- Tubeless Ready
- 120 TPI Skinwall casing
- Soft race compound 47 ShA

### AVAILABLE SIZES

↗ 29 x 2.25

# Puma



## Narrow XCM mud expert

- The non-directional wet & muddy tire.
- This narrow XCM wet and mud expert is designed specifically for moist rainy weathers when self-cleaning and clearance between the tire and frame matters most. Avoiding the tires wrapped in sticky mud rubbing the fork and frame is what sorts out the winners to stand out from the crowd. The rough pattern gives Puma exceptional grip and traction.

SIDEWALL COLORS ⚡ BLACK

### TERRAIN

Mud | Rock | Loose | Gravel | Paved

Puma

XC/Marathon



## Puma Pro

- Aramid bead
- Tubeless Ready
- 120 TPI Skinwall casing
- Bead-to-Bead impact damage guard
- Soft race compound 47 ShA

### AVAILABLE SIZES

↗ 29 x 2.10

## Puma Race

- Aramid bead
- Tubeless Ready
- 120 TPI Skinwall casing
- Soft race compound 47 ShA

### AVAILABLE SIZES

↗ 29 x 2.10

# Wildcat



## Wildcat

- Aramid bead
- Tubeless Ready Optional
- 60 TPI Skinwall casing

### AVAILABLE SIZES

- 29 x 2.45
  - 27.5 x 2.10
  - 29 x 2.10
  - 29 x 2.10 eReady
- Twisted steel wire



## Backcountry XCM friend

- Like the domestic cat. Comfortably suitable for light terrains.
- Almost like a gravel tire. Well-balanced tread pattern for easy riding. The reliable choice for leisure and hobby riding, family adventures and beyond.

SIDEWALL COLORS ➤ BLACK

### TERRAIN

Mud Rock Loose Gravel Paved

Wildcat

XC/Tour

# Lynx



## Lynx

- Aramid bead
- Tubeless Ready Optional
- 60 TPI Skinwall casing
- Dual compound 57/47 ShA Optional

### AVAILABLE SIZES

- 29 x 2.35
- 29 x 2.25
- 29 x 2.10
- 27.5 x 2.35



## Lynx Pro

- Aramid bead
- Tubeless Ready
- 120 TPI Skinwall casing
- Bead-to-Bead impact damage guard
- Soft race compound 47 ShA

### AVAILABLE SIZES

- 27.5 x 2.35

## Lynx Race

- Aramid bead
- Tubeless Ready
- 120 TPI Skinwall casing
- Soft race compound 47 ShA

### AVAILABLE SIZES

- 27.5 x 2.35

## Diamond-eyed XCM mountain buddy

- Natural loose and soft terrain touring tire.
- The diamond shaped tread blocks work as the Lynx's padded paws providing a soft feel and comfortably smooth riding. The sharp-cut shoulder tread blocks offer reliable grip at cornering even in loose and soft soils.

SIDEWALL COLORS ➤ BLACK

### TERRAIN

Mud Rock Loose Gravel Paved

Lynx

XC/Tour



# zleen RACE



**Aspiring for the podium? Choose the Zleen Factory Race range.**

Benefiting from collaboration with prominent Elite riders the Zleen Factory Race tires' design is centered around unparalleled performance at race grade conditions. Featuring the unique soft race compound and lightweight casing the Zleen Race tires are developed exclusively for competitive riders. The specialty 10% lighter construction and a single 47 ShA soft race compound represent the winning formula that sets the limited Factory Race range far apart.

The Zleen Race tires are available in 4 competitive riding sizes (29 and 27.5") and 5 treads patterns including the narrow 29 x 2.10 Puma for wet muddy conditions always keeping comfortable frame clearance. Custom designed sizes and patterns are ready to go on request. Just ask!

**Cheetah**



**Leopard**



**Panther**



**Puma**



**Lynx**



SIZE	METRIC	PATTERN	TPI	SIDEWALL	TR/TT	BEAD	TREAD COLOR	SIDEWALL COLOR	SPECIAL COMPOUND	INFLATION (kPa)	LOAD (kg)	WEIGHT (kg)
29 x 2.45	62-622	<b>Panther</b>	120	Skinwall	TR	A	Black	Black	SRC	350	140	860
29 x 2.25	57-622	<b>Leopard</b>	120	Skinwall	TR	A	Black	Black	SRC	380	140	720
29 x 2.25	57-622	<b>Cheetah</b>	120	Skinwall	TR	A	Black	Black	SRC	380	140	720
29 x 2.10	54-622	<b>Puma</b>	120	Skinwall	TR	A	Black	Black	SRC	380	140	640
27.5 x 2.35	60-584	<b>Lynx</b>	120	Skinwall	TR	A	Black	Black	SRC	350	130	750

# zleen RADICAL



## **Zleen Racerunner Radical** **Born 100% Radial**

Introducing the true radial bicycle tire — the Zleen Racerunner Radical. Inspired by the raw efficiency of nature and crafted with Zleen's unique technical and manufacturing expertise, this tire isn't just a step forward — it's a leap into the future of cycling.

### **Meet the Racerunner**

The Racerunner — a lizard known for its incredible speed and agility. The master of navigating difficult terrains with remarkable ease. Be it a rugged land, rocky landscapes, gravel paths, and dense forest trails, the racerunner weaves effortlessly over the uneven ground zipping between rocks and roots faster than the eye can follow.

### **Featherweight. Heavy-Hitting.**

At just 550 grams, the Racerunner Radical shaves off a full 25% of the weight compared to the Zleen Leopard Pro — without compromising durability. Its slim profile and wide tread zone create a uniquely shaped cross-section for maximum resistance to cuts. With bead-to-bead fabric protection built in, you're armored against impact damage — and still flying light.

**Ride Radical. Ride Racerunner.  
Ride Zleen.**

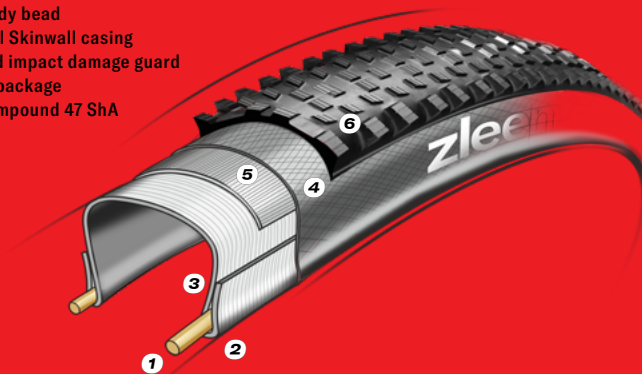
## **Radial. Revolutionary. Radical.**

Zleen's Radical Technology marks a defining moment in bicycle tire innovation. With the 88° true radial casing, the Racerunner Radical breaks away from traditional bias-ply construction to deliver game-changing benefits:

- + **30% Larger Contact Patch**  
For near-absolute traction and razor-sharp cornering — grip like you've never experienced before.
- + **70% Higher Inflation Pressure**  
Slashes rolling resistance by an astounding 40%, turning every watt into momentum.

## **Born 100% Radial**

- ❶ Aramid bead
- ❷ Tubeless Ready bead
- ❸ 120 TPI Radial Skinwall casing
- ❹ Bead-to-Bead impact damage guard
- ❺ Breaker belt package
- ❻ Soft Race Compound 47 ShA

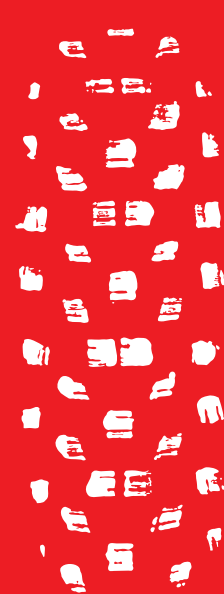


# Racerunner



## Key Benefits

- + 30% **Larger Contact Patch**
- + 70% **Higher Inflation Pressure**
- 40% **Lower Rolling Resistance**
- 25% **Weight Reduction**



**Zleen Racerunner Radical**  
29 x 2.25 R



**Zleen Leopard Pro Tubeless**  
29 x 2.25

SIDEWALL COLORS ⚡ BLACK

TERRAIN

Mud

Rock

Loose

Gravel

Paved

**Racerunner**

XC/Marathon

### Racerunner Radical

- Aramid bead
- Tubeless Ready
- 120 TPI Skinwall casing
- Radial belt
- Bead-to-Bead impact damage guard
- Soft Race compound 47 ShA

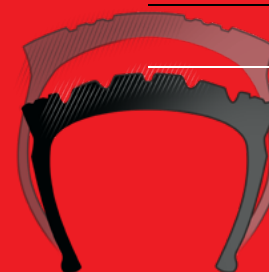
#### AVAILABLE SIZES

➤ 29 x 2.25 R

### Zleen Leopard Pro Tubeless

#### Zleen Racerunner Radical

Slim profile and wide tread zone of the Zleen Racerunner Radical create a uniquely shaped cross-section for maximum durability, resistance to cuts, and snakebites.





# zleen

## GRAVITY



Perfected for predator-like grip.  
Soft Race compounded wherever handy.  
Zleen Gravity, Gravity Pro  
and Gravity DH Pro.

### GRAVITY

- 1 Aramid bead
- 2 Tubeless Ready
- 3 60 TPI Skinwall casing
- 4 Bead-to-Bead impact damage guard
- 5 Dual compound 47/57 ShA
- 6 Apex reinforced



### GRAVITY Pro

- 1 Reinforced aramid bead
- 2 Tubeless Ready
- 3 120 TPI Skinwall casing
- 4 Bead-to-Bead impact damage guard
- 5 Apex reinforced sidewall
- 6 Soft Race compound 47 ShA



### GRAVITY DH Pro

- 1 Reinforced aramid bead
- 2 Tubeless Ready
- 3 120 TPI Skinwall casing
- 4 Bead-to-Bead impact damage guard
- 5 Apex reinforced sidewall
- 6 Dual-ply casing with an added body ply
- 7 Soft Race compound 47 ShA





# Hawk



SIDEWALL COLORS  
⚡ BLACK ⚡ TAN

PAGE  
19

# Falcon



SIDEWALL COLORS  
⚡ BLACK ⚡ TAN

PAGE  
19

# Lion



SIDEWALL COLORS  
⚡ BLACK

PAGE  
20

# Tiger



SIDEWALL COLORS  
⚡ BLACK

PAGE  
20

# Panther



SIDEWALL COLORS  
⚡ BLACK

PAGE  
21

# GRAVITY Pro

# GRAVITY DH Pro

# GRAVITY

# Hawk



## Hawk Pro

- Reinforced ramid bead
- Tubeless Ready
- 120 TPI Skinwall casing
- Bead-to-Bead impact damage guard
- Soft race compound 47 ShA
- Apex reinforced sidewall

### AVAILABLE SIZES

- ↗ 29 x 2.60
- ↗ 29 x 2.60 ⚡
- ↗ 29 x 2.45
- ↗ 27.5 x 2.60
- ↗ 27.5 x 2.60 ⚡
- ↗ 27.5 x 2.45

## Hawk DH Pro

- Reinforced ramid bead
- Tubeless Ready
- 120 TPI Skinwall casing
- Bead-to-Bead impact damage protected 2 plies DH
- Soft race compound 47 ShA
- Apex reinforced sidewall

### AVAILABLE SIZES

- ↗ 29 x 2.45
- ↗ 27.5 x 2.45

## Downhill Enduro prey hunter

- True Downhill and Enduro high performance tire.
- Inspired by enduro motorcycle tires, Hawk features alternately pitched centerline blocks and deep shoulder knobs for aggressive downhill rides, excellent steering response and superb braking performance. Suited best for hard and rocky terrains while working great in mud and soft soils.

SIDEWALL COLORS ↗ BLACK ⚡ TAN

### TERRAIN

Mud

Rock

Hard

Gravel

Hawk

DH/Enduro

# Falcon



## Falcon Pro

- Reinforced ramid bead
- Tubeless Ready
- 120 TPI Skinwall casing
- Bead-to-Bead impact damage guard
- Soft race compound 47 ShA
- Apex reinforced sidewall

### AVAILABLE SIZES

- ↗ 29 x 2.50
- ↗ 29 x 2.50 ⚡
- ↗ 27.5 x 2.50
- ↗ 27.5 x 2.50 ⚡

## Flying Enduro/Trail diver

- Fast Enduro and Trail tire.
- Dual robust centerline blocks for sure baking performance, tough rocky ground and hard surface grip. Moderately rough shoulder blocks guarantee smooth rolling and fine streeing response at high speeds. Falcon delivers the experince of having the ride under control.

SIDEWALL COLORS ↗ BLACK ⚡ TAN

### TERRAIN

Mud

Rock

Hard

Gravel

Falcon

Enduro/Trail

# Lion



## Lion

- Aramid bead
- Tubeless Ready
- 60 TPI Skinwall casing
- Bead-to-Bead impact damage guard
- Apex reinforced
- Dual compound 57/47 ShA

### AVAILABLE SIZES

↗ 27.5 x 2.45

## Lion Pro

- Reinforced ramid bead
- Tubeless Ready
- 120 TPI Skinwall casing
- Bead-to-Bead impact damage guard
- Apex reinforced sidewall
- Soft race compound 47 ShA

### AVAILABLE SIZES

↗ 27.5 x 2.45

## XC/MARATHON Lion

### AVAILABLE SIZES

↗ 27.5 x 2.45

## XC/MARATHON Lion Pro

### AVAILABLE SIZES

↗ 27.5 x 2.45

## King of Allmountain Trail

- Trail crossover. Allmountain and less demanding Trail tire.
- Lower net to gross ratio guarantees excellent self-cleaning properties. Deep and robust shoulder blocks hold best at fast cornering and fine riding style.

SIDEWALL COLORS ↗ BLACK

### TERRAIN

Mud | Rock | Hard | Gravel

Lion

AM/Trail

# Tiger



## Tiger

- Aramid bead
- Tubeless Ready
- 60 TPI Skinwall casing
- Bead-to-Bead impact damage guard
- Dual compound 57/47 ShA
- Apex reinforced

### AVAILABLE SIZES

↗ 29 x 2.35

## Tiger Pro

- Reinforced ramid bead
- Tubeless Ready
- 120 TPI Skinwall casing
- Bead-to-Bead impact damage guard
- Apex reinforced sidewall
- Soft race compound 47 ShA

### AVAILABLE SIZES

↗ 29 x 2.35

## XC/MARATHON Tiger

### AVAILABLE SIZES

↗ 29 x 2.35

## XC/MARATHON Tiger Pro

### AVAILABLE SIZES

↗ 29 x 2.35

## Allmountain Trail predator

- Allmountain Trail specialist. XCM Trail crossover.
- The Trail crossover. Tiger's robust tread blocks and generous tread depth predetermine the tire for aggressive riding style on fast, tough and steep rocky mountain paths and muddy trails. Excellent for sharp cornering, quick speed variations, and short braking.

SIDEWALL COLORS ↗ BLACK

### TERRAIN

Mud | Rock | Hard | Gravel

Tiger

AM/Trail



# Panther



## Wide and black Enduro Trail mate

- Universal Enduro and less demanding trails tire. XCM corssover.
- Finer than Hawk, Panther is best suited for harder and rockier surfaces while providing decent stability in muddy and soft terrains. The dense and deep center rib ensures great grip. The elaborate shoulder blocks work best at cornering and fast acceleration.

SIDEWALL COLORS ⚡ BLACK

### TERRAIN

Mud

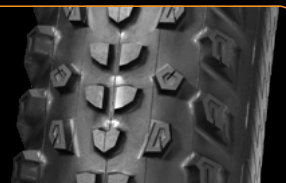
Rock

Hard

Gravel

**Panther**

Enduro/Trail



## Panther Pro

- Reinforced aramid bead
- Tubeless Ready
- 120 TPI Skinwall casing
- Bead-to-Bead impact damage guard
- Soft race compound 47 ShA
- Apex reinforced sidewall

### AVAILABLE SIZES

- ↗ 29 x 2.45
- ↗ 27.5 x 2.45

## XC/MARATHON Panther

### AVAILABLE SIZES

- ↗ 29 x 2.45
- ↗ 29 x 2.45 eReady
- ↗ 27.5 x 2.45
- ↗ 27.5 x 2.45 eReady

## XC/MARATHON Panther Pro

### AVAILABLE SIZES

- ↗ 29 x 2.45
- ↗ 29 x 2.45 eReady
- ↗ 27.5 x 2.45
- ↗ 27.5 x 2.45 eReady

## Panther Race

- Aramid bead
- Tubeless Ready
- 120 TPI Skinwall casing
- Soft Race compound

### AVAILABLE SIZES

- ↗ 29 x 2.45



## Anet Hovorková

- Czech U23 XC Marathon (XCM) National Champion 2023, 2024
- Zleen Leopard Race and Zleen Cheetah Race

zleen ATHLETES zleen ATHLETES



# zleen

## GRAVEL

Silica based high grip tread compounds and bead-to-bead protected casings for race. Lightweight tires for effortless freedom of movement. Zleen Gravel and Gravel Pro.



### GRAVEL

- 1 Aramid bead
- 2 60 TPI Skinwall casing



### GRAVEL Pro

- 1 Aramid bead
- 2 Tubeless Ready
- 3 120 TPI Skinwall casing
- 4 Bead-to-Bead impact damage guard
- 5 Silica compound



# Wolf



## SIDEWALL COLORS

⚡ BLACK ⚡ GREY ⚡ TAN

## PAGE

25

# Dingo



## SIDEWALL COLORS

⚡ BLACK

## PAGE

26

# Coyote



## SIDEWALL COLORS

⚡ BLACK ⚡ GREY ⚡ TAN

## PAGE

25



SIZE	METRIC	PATTERN	TPI	SIDEWALL	TR/TT	BEAD	PP MATERIAL	IMPACT PROTECTED	SIDEWALL REINFORCED	TREAD COLOR	SIDEWALL COLOR	SPECIAL COMPOUND	INFLATION (kPa)	LOAD (kg)	WEIGHT (g)
700 x 45C	47-622	<b>Dingo</b>	120	Skinwall	TR	A		B2B		Black	Black	SC	350	125	660
700 x 42C	44-622	<b>Coyote</b>	120	Skinwall	TR	A		B2B		Black	Black	SC	470	125	610
700 x 42C	44-622	<b>Coyote</b>	120	Skinwall	TR	A		B2B		Black	Grey	SC	470	125	610
700 x 40C	42-622	<b>Dingo</b>	120	Skinwall	TR	A		B2B		Black	Black	SC	500	125	580
700 x 40C	42-622	<b>Wolf</b>	120	Skinwall	TR	A		B2B		Black	Black	SC	500	120	570
700 x 40C	42-622	<b>Wolf</b>	120	Skinwall	TR	A		B2B		Black	Grey	SC	500	120	570
700 x 38C	40-622	<b>Coyote</b>	120	Skinwall	TR	A		B2B		Black	Black	SC	550	118	560
700 x 38C	40-622	<b>Coyote</b>	120	Skinwall	TR	A		B2B		Black	Tan	SC	550	118	560
700 x 35C	37-622	<b>Wolf</b>	120	Skinwall	TR	A		B2B		Black	Black	SC	600	115	540
700 x 35C	37-622	<b>Wolf</b>	120	Skinwall	TR	A		B2B		Black	Tan	SC	600	115	540

GRAVEL Pro

700 x 42C	44-622	<b>Coyote</b>	60	Skinwall	TT	A				Black	Black	O	470	125	620
700 x 40C	42-622	<b>Wolf</b>	60	Skinwall	TT	A				Black	Black	O	500	120	580
700 x 38C	40-622	<b>Coyote</b>	60	Skinwall	TT	A				Black	Black	O	550	118	550
700 x 35C	37-622	<b>Wolf</b>	60	Skinwall	TT	A				Black	Black	O	600	115	530

GRAVEL



# Wolf



## King of the Gravel woods

- Packed soil and loose gravel tire.
- Even if the terrain gets a little muddy the dense and deep center rib ensures great grip and short braking distance providing considerably smooth and fast riding. The shoulder blocks control steering and keep the bike responsive.

SIDEWALL COLORS ⚡ BLACK ⚡ GREY ⚡ TAN

### TERRAIN

Loose

Gravel

Paved

Wolf

Grassland



## Wolf

- Aramid bead
- 60 TPI Skinwall casing

### AVAILABLE SIZES

- 700 x 40C
- 700 x 35C

## Wolf Pro

- Aramid bead
- Tubeless Ready
- 120 TPI Skinwall casing
- Bead-to-Bead impact damage guard
- Silica compound

### AVAILABLE SIZES

- 700 x 40C
- 700 x 40C ⚡
- 700 x 35C
- 700 x 35C ⚡

# Coyote



## Grassland Gravel rebel

- Solid ground and dust tire.
- Three rows of fine centerline tread blocks provide for low rolling resistance and smooth ride on gravel and paved paths. Medium high shoulder knobs ensure firm support at cornering and in soft terrains.

SIDEWALL COLORS ⚡ BLACK ⚡ GREY ⚡ TAN

### TERRAIN

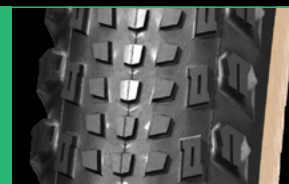
Loose

Gravel

Paved

Coyote

Woods



## Coyote

- Aramid bead
- 60 TPI Skinwall casing

### AVAILABLE SIZES

- 700 x 42C
- 700 x 38C

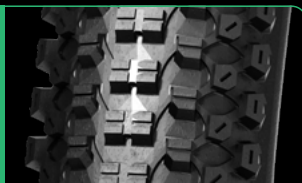
## Coyote Pro

- Aramid bead
- Tubeless Ready
- 120 TPI Skinwall casing
- Bead-to-Bead impact damage guard
- Silica compound

### AVAILABLE SIZES

- 700 x 42C
- 700 x 42C ⚡
- 700 x 38C
- 700 x 38C ⚡

# Dingo



## Dingo Pro

- Aramid bead
- Tubeless Ready
- 120 TPI Skinwall casing
- Bead-to-Bead impact damage guard
- Silica compound

### AVAILABLE SIZES

➤ 700 x 40C

## CITY/TOUR Dingo eReady

### AVAILABLE SIZES

- 700 x 45C
- 700 x 40C
- 700 x 35C
- 700 x 32C

## Gravel Universal

- All-round gravel tire.
- This universal gravel tire provides sure grip and steering response while offering optimized energy saving rolling resistance. Non-directional square block and dense tread pattern is the safe bet choice for sporty enthusiast and hobby explorers alike.

SIDEWALL COLORS ➤ BLACK

### TERRAIN

Loose

Gravel

Paved

Dingo

Universal



## Jaroslav Kulhavý

- World champion in Cross Country and Marathon
- The Gold medalist in London Olympics 2012
- The Silver medalist in Rio Olympics 2016
- Cape Epic winner
- Zleen Cheetah Race

zleen ATHLETES zleen ATHLETES



# zleen

## SEAL PRO



### New Zleen Seal Pro

*From high-pressure road races to low-pressure downhill stunts, the premium Zleen Seal Pro tubeless milk quickly and effectively seals any air leaks caused by crevices or punctures. The specially designed formula works fast, even in wet conditions. Plus, Zleen Seal Pro is eco-friendly, made from ammonia-free synthetic latex that prevents allergies, eliminates odors, and helps save rainforests.*

*The new Zleen Seal Pro tubeless milk is made in the UK under license by OKO Group.*

*Available in 250 ml and 1,000 ml containers.*

RIM SIZE	ROAD	GRAVEL	XC/MARATHON	GRAVITY (DH/ENDURO)
700	30-50 ml	60-80 ml		
27.5"			80-100 ml	100-120 ml
29"			100-120 ml	120-140 ml





# zleen

## ROAD



Wet grip compounds.  
Bead-to-bead protected.  
Fast and reliable.  
Zleen Road and Road Pro.

### ROAD

- 1 Aramid bead
- 2 60 TPI Skinwall casing



### ROAD Pro

- 1 Aramid bead
- 2 Tubeless Ready
- 3 120 TPI Skinwall casing
- 4 Bead-to-Bead impact damage guard
- 5 Silica compound



# Boa



SIDEWALL COLORS  
⚡ BLACK

PAGE  
31

**zleen** ROAD

# Taipan



SIDEWALL COLORS  
⚡ BLACK

PAGE  
31

# ROAD Pro

# ROAD



# Boa



## Boa

- Aramid bead
- 60 TPI Skinwall casing

### AVAILABLE SIZES

- ↗ 700 x 28C
- ↗ 700 x 25C

## Boa Pro

- Aramid bead
- Tubeless Ready
- 120 TPI Skinwall casing
- Bead-to-Bead impact damage guard
- Silica compound

### AVAILABLE SIZES

- ↗ 700 x 28C
- ↗ 700 x 25C

## Dry Road racer

- True dry road race tire.
- The true dry road race tire featuring fine shoulder zee pattern for racing performance. Its fast compounds contain silica in the Pro version for excellent grip at fast cornering and deep tilt in high speeds and short turns.

SIDEWALL COLORS ↗ BLACK

### SURFACE

Smooth

Rough

Boa

Race

# Taipan



## Taipan

- Aramid bead
- 60 TPI Skinwall casing

### AVAILABLE SIZES

- ↗ 700 x 28C
- ↗ 700 x 25C

## Taipan Pro

- Aramid bead
- Tubeless Ready
- 120 TPI Skinwall casing
- Bead-to-Bead impact damage guard
- Silica compound

### AVAILABLE SIZES

- ↗ 700 x 28C
- ↗ 700 x 25C

## Drizzle Road competitor

- Great allround dry and wet competition tire.
- The drizzle tire. Fine-deep shoulder pattern safeguards sure grip at rough and wet roads. Fast compounds containing silica in the Pro version ensure excellent grip at fast cornering and deep tilt in high speeds and short turns.

SIDEWALL COLORS ↗ BLACK

### SURFACE

Smooth

Rough

Taipan

Competition

# zleen

## CITY/TOUR

Safety at its best.  
eReady reinforced and puncture protected.  
Reflective safety strips.  
Durable mileage compounds.  
Zleen City and Tour.



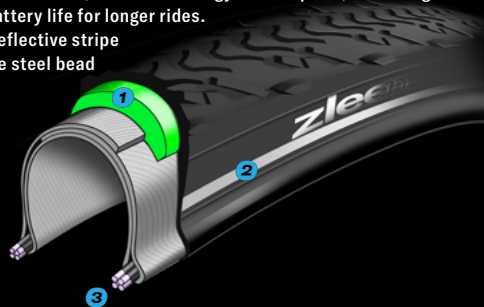
### CITY/TOUR

- 1 Ebike-optional eReady series feature optimized low rolling resistance 2mm under-tread puncture protection (HE). Enables effortless freedom of riding. Reduces risk of tire defect.
- 2 HiVis reflective stripe
- 3 Flexible steel bead



### eReady 5

- 1 5mm under-tread compound (RC) designed to protect e-bike tires from punctures while improving efficiency. With its low rolling resistance, it reduces energy consumption, extending your battery life for longer rides.
- 2 HiVis reflective stripe
- 3 Flexible steel bead



### Black Neon

- 4 The 10mm Wide Reflective Tape is a state-of-the-art design element that blends seamlessly with the tire during daylight, only to reveal its full safety potential at night.





# Dingo



SIDEWALL COLORS  
⚡ BLACK

PAGE  
35

# Jackal



SIDEWALL COLORS  
⚡ BLACK

PAGE  
35

# Rat



SIDEWALL COLORS  
⚡ BLACK

PAGE  
36

# Bumblebee



SIDEWALL/TREAD COLORS  
⚡ BLACK ⚡ TAN

PAGE  
36

# Hornet



SIDEWALL COLORS  
⚡ BLACK

PAGE  
37

# Fly



SIDEWALL COLORS  
⚡ BLACK

PAGE  
37



# Dingo



## Dingo eReady

- Flexible steel bead
- HiVis reflective stripe
- eReady

### AVAILABLE SIZES

- 700 x 45C
- 700 x 40C
- 700 x 35C
- 700 x 32C

## GRAVEL Dingo Pro

### AVAILABLE SIZES

- 700 x 40C



## City tourer

- The touring and city allrounder.
- The fine-rough scattered tread pattern ensures sure grip at even uneven surfaces and sharp edges, cobblestones and hard unpaved trails. The tread-shoulder block pattern provides excellent stability on unleveled surfaces while the robust centerline safeguards excellent grip and braking characteristics on slippery roads.

SIDEWALL COLORS ➤ BLACK

### APPLICATION

Flat Paved | Light Trail | Cobblestone | Freight

Dingo

Braking/Cornering

# Jackal



## Jackal eReady

- Flexible steel bead
- HiVis reflective stripe
- eReady

### AVAILABLE SIZES

- 700 x 45C
- 700 x 40C
- 700 x 35C



## Rough Tour road survivor

- Mountainbike-like performer.
- Almost mountainbike-like tread pattern predestine the city Jackal for rough roads, city parks and exploring into the neighboring countryside. This city wolf is suited for survival even under the wildest riding styles, when hitting the piercing granite curbs or crossing sharp-edged steel train or tram tracks.

SIDEWALL COLORS ➤ BLACK

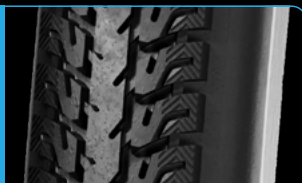
### APPLICATION

Flat Paved | Light Trail | Cobblestone | Freight

Jackal

Allweather Gravel

# Rat



## Rat eReady

- Flexible steel bead
- HiVis reflective stripe
- eReady

### AVAILABLE SIZES

- 700 x 45C
- 700 x 40C
- 700 x 35C



## Concrete jungle City explorer

- True citigrade tire.
- The deep, dense and flat-shaped tread predetermine this city rat for the concrete jungle explorations. Well suited for wet surfaces. The generous amount of rubber guarantees exceptionally long lifecycle and thus considerably low carbon footprint.

SIDEWALL COLORS ➤ BLACK

### APPLICATION

Flat Paved | Light Trail | Cobblestone | Freight

Rat

Smooth Performer

# Bumblebee



## Bumblebee eReady

- Flexible steel bead
- HiVis reflective stripe
- eReady

### AVAILABLE SIZES

- 700 x 45C
- 700 x 45C ⚡⚡
- 28 x 2.10
- 28 x 2.10 ⚡⚡
- 26 x 1.75 x 2
- 26 x 1.75 x 2 ⚡⚡



## All weather City/Tour breaker

- Dry and wet commuting performer.
- The V-shaped directional tread pattern for sure touring comfort. Ideal for high speed commuting. The fine tread-shoulder grooves provide excellent water evacuation properties at the wet weather. The robust cenetrline guarantees unquestionable braking characteristics even on slippery surfaces such as cobblestones.

SIDEWALL/TREAD COLORS ➤ BLACK ⚡ CREAM

### APPLICATION

Flat Paved | Light Trail | Cobblestone | Freight

Bumblebee

Allweather



# Hornet



## Hornet Black Neon eReady 5

- Flexible steel bead
- Black Neon reflective stripe
- eReady 5 (5mm protection)

### AVAILABLE SIZES

➤ 26 x 2.00



## Freight bike expert

- Heavy duty miler.
- Standard 5mm puncture guard, the generously wide invisible-at-daylight but shining bright at night reflective stripe, and extra durable-while grippy compound makes Hornet the best choice for freight or cargo bikes. Every mail or food delivery hits the destination safely in time. Day or night, at sunshine or in rainy days. The Zleen Hornet eReady 5 keeps hard working mile after mile.

SIDEWALL COLORS ➤ BLACK

### APPLICATION

Flat Paved | Light Trail | Cobblestone | Freight

**Hornet**

Heavy Duty

# Fly



## Fly Black Neon eReady 5

## Fly eReady

- Flexible steel bead
- HiVis reflective stripe
- eReady

### AVAILABLE SIZES

➤ 700 x 45C  
➤ 700 x 40C  
➤ 700 x 35C  
➤ 700 x 32C  
➤ 700 x 28C



## Classy City commuter

- Unparalleled light and effortless roller.
- Ideal for commuter service. The smooth centerline ensures absolutely low rolling resistance and quiet riding experience. The fine shoulder pattern provides safe steering response even at fast changes in direction and speeds as well as the reliable wet performance.

SIDEWALL COLORS ➤ BLACK

### APPLICATION

Flat Paved | Light Trail | Cobblestone | Freight

**Fly**

Smooth Rider

## Fly Black Neon eReady

- Flexible steel bead
- Black neon reflective stripe
- eReady

### AVAILABLE SIZES

➤ 700 x 45C  
➤ 700 x 40C  
➤ 700 x 35C  
➤ 700 x 32C

## Fly Black Neon eReady 5

- Flexible steel bead
- 60 TPI
- Black Neon reflective stripe
- eReady 5 (5mm protection)

### AVAILABLE SIZES

➤ 700 x 35C  
➤ 700 x 32C  
➤ 700 x 28C

# Product Range

SIZE	METRIC	PATTERN	TPI	SIDEWALL	TR/TT	BEAD	PROTECTED	PP MATERIAL	IMPACT PROTECTED	SIDEWALL REINFORCED	REFLECTIVE STRIPE	TREAD COLOR	SIDEWALL COLOR	SPECIAL COMPOUND	INFLATION (kPa)	LOAD (kg)	WEIGHT (g)
29 x 2.45	62-622	<b>Panther</b>	120	Skinwall	TR	A			B2B			Black	Black	SRC	350	140	970
29 x 2.45	62-622	<b>Panther</b>	60	Skinwall	TR	A						Black	Black	DC	350	140	890
29 x 2.45	62-622	<b>Panther</b>	120	Skinwall	TR	A	eReady	HE	B2B			Black	Black	O	350	140	1110
29 x 2.45	62-622	<b>Panther</b>	60	Skinwall	TR	A	eReady	HE				Black	Black	O	350	140	1120
29 x 2.45	62-622	<b>Wildcat</b>	60	Skinwall	TT	A						Black	Black	O	350	140	890
29 x 2.45	62-622	<b>Panther Race</b>	120	Skinwall	TR	A						Black	Black	SRC	350	140	860
29 x 2.35	60-622	<b>Tiger</b>	120	Skinwall	TR	A			B2B			Black	Black	SRC	350	130	880
29 x 2.35	60-622	<b>Tiger</b>	60	Skinwall	TR	A						Black	Black	DC	350	130	890
29 x 2.35	60-622	<b>Lynx</b>	60	Skinwall	TT	A						Black	Black	O	350	130	860
29 x 2.25 R	R 57-622	<b>Racerunner</b>	120	Skinwall	TR	A	RB	PF	B2B			Black	Black	SRC	380	140	550
29 x 2.25	57-622	<b>Leopard Race</b>	120	Skinwall	TR	A			B2B			Black	Black	SRC	380	140	750
29 x 2.25	57-622	<b>Leopard</b>	60	Skinwall	TR	A						Black	Black	DC	380	140	760
29 x 2.25	57-622	<b>Cheetah</b>	120	Skinwall	TR	A			B2B			Black	Black	SRC	380	140	750
29 x 2.25	57-622	<b>Cheetah</b>	60	Skinwall	TR	A						Black	Black	DC	380	140	760
29 x 2.25	57-622	<b>Lynx</b>	60	Skinwall	TT	A						Black	Black	O	315	140	810
29 x 2.25	57-622	<b>Leopard</b>	120	Skinwall	TR	A			B2B			Black	Tan	SRC	380	140	750
29 x 2.25	57-622	<b>Leopard</b>	120	Skinwall	TR	A			B2B			Black	Grey	SRC	380	140	750
29 x 2.25	57-622	<b>Cheetah</b>	120	Skinwall	TR	A			B2B			Black	Tan	SRC	380	140	750
29 x 2.25	57-622	<b>Cheetah</b>	120	Skinwall	TR	A			B2B			Black	Grey	SRC	380	140	750
29 x 2.25	57-622	<b>Leopard</b>	120	Skinwall	TR	A						Black	Black	SRC	380	140	720
29 x 2.25	57-622	<b>Cheetah Race</b>	120	Skinwall	TR	A						Black	Black	SRC	380	140	720
29 x 2.10	54-622	<b>Lynx</b>	60	Skinwall	TT	A						Black	Black	O	400	125	770
29 x 2.10	54-622	<b>Wildcat</b>	60	Skinwall	TT	A						Black	Black	O	350	125	770
29 x 2.10	54-622	<b>Puma</b>	120	Skinwall	TR	A			B2B			Black	Black	SRC	380	140	680
29 x 2.10	54-622	<b>Puma Race</b>	120	Skinwall	TR	A						Black	Black	SRC	380	140	640
29 x 2.10	54-622	<b>Wildcat</b>	60	Skinwall	TT	TW	eReady	HE				Black	Black	O	350	125	910
27.5 x 2.45	62-584	<b>Lion</b>	120	Skinwall	TR	A			B2B			Black	Black	SRC	350	135	880
27.5 x 2.45	62-584	<b>Lion</b>	60	Skinwall	TR	A						Black	Black	DC	350	135	890
27.5 x 2.45	62-584	<b>Panther</b>	120	Skinwall	TR	A			B2B			Black	Black	SRC	350	135	920
27.5 x 2.45	62-584	<b>Panther</b>	60	Skinwall	TR	A						Black	Black	DC	350	135	890
27.5 x 2.45	62-584	<b>Panther</b>	120	Skinwall	TR	A	eReady	HE	B2B			Black	Black	O	350	135	1040
27.5 x 2.45	62-584	<b>Panther</b>	60	Skinwall	TR	A	eReady	HE				Black	Black	O	350	135	1050
27.5 x 2.35	60-584	<b>Lynx</b>	60	Skinwall	TR	A						Black	Black	DC	350	130	810
27.5 x 2.35	60-584	<b>Lynx Race</b>	120	Skinwall	TR	A						Black	Black	SRC	350	130	750
27.5 x 2.35	60-584	<b>Lynx</b>	120	Skinwall	TR	A			B2B			Black	Black	SRC	350	130	795
27.5 x 2.25	57-584	<b>Leopard</b>	120	Skinwall	TR	A			B2B			Black	Black	SRC	380	135	710
27.5 x 2.25	57-584	<b>Leopard</b>	60	Skinwall	TR	A						Black	Black	DC	380	135	720
27.5 x 2.10	54-584	<b>Wildcat</b>	60	Skinwall	TT	A						Black	Black	O	400	120	750
29 x 2.60	66-622	<b>Hawk</b>	120	Skinwall	TR	AR			B2B	Apex		Black	Black	SRC	320	150	1190
29 x 2.60	66-622	<b>Hawk</b>	120	Skinwall	TR	AR			B2B	Apex		Black	Tan	SRC	320	150	1190
29 x 2.50	64-622	<b>Falcon</b>	120	Skinwall	TR	AR			B2B	Apex		Black	Black	SRC	330	142	1190
29 x 2.50	64-622	<b>Falcon</b>	120	Skinwall	TR	AR			B2B	Apex		Black	Tan	SRC	330	142	1190
29 x 2.45	62-622	<b>Hawk</b>	120	Skinwall	TR	AR			B2B	Apex		Black	Black	SRC	350	140	1150

SIZE	METRIC	PATTERN	TPI	SIDEWALL	TR/TT	BEAD	PROTECTED	PP MATERIAL	IMPACT PROTECTED	SIDEWALL REINFORCED	REFLECTIVE STRIPE	TREAD COLOR	SIDEWALL COLOR	SPECIAL COMPOUND	INFLATION (kPa)	LOAD (kg)	WEIGHT (g)
29 x 2.45	62-622	<b>Panther</b>	120	Skinwall	TR	AR			B2B	Apex		Black	Black	SRC	350	140	1 050
29 x 2.45	62-622	<b>Hawk DH</b>	120	Skinwall	TR	AR		2 plies	B2B	Apex		Black	Black	SRC	350	160	1 470
29 x 2.35	60-622	<b>Tiger</b>	120	Skinwall	TR	AR			B2B	Apex		Black	Black	SRC	350	135	960
29 x 2.35	60-622	<b>Tiger</b>	60	Skinwall	TR	AR			B2B	Apex		Black	Black	DC	350	135	1 000
27.5 x 2.60	66-584	<b>Hawk</b>	120	Skinwall	TR	AR			B2B	Apex		Black	Black	SRC	320	145	1 120
27.5 x 2.60	66-584	<b>Hawk</b>	120	Skinwall	TR	AR			B2B	Apex		Black	Tan	SRC	320	145	1 120
27.5 x 2.50	64-584	<b>Falcon</b>	120	Skinwall	TR	AR			B2B	Apex		Black	Black	SRC	330	137	1 120
27.5 x 2.50	64-584	<b>Falcon</b>	120	Skinwall	TR	AR			B2B	Apex		Black	Tan	SRC	330	137	1 120
27.5 x 2.45	62-584	<b>Hawk</b>	120	Skinwall	TR	AR			B2B	Apex		Black	Black	SRC	350	135	1 080
27.5 x 2.45	62-584	<b>Lion</b>	120	Skinwall	TR	AR			B2B	Apex		Black	Black	SRC	350	135	950
27.5 x 2.45	62-584	<b>Lion</b>	60	Skinwall	TR	AR			B2B	Apex		Black	Black	DC	350	135	1 000
27.5 x 2.45	62-584	<b>Panther</b>	120	Skinwall	TR	AR			B2B	Apex		Black	Black	SRC	350	135	990
27.5 x 2.45	62-584	<b>Hawk DH</b>	120	fullwall	TR	AR		2 plies	B2B	Apex		Black	Black	SRC	350	160	1 380
700 x 45C	47-622	<b>Dingo</b>	120	Skinwall	TR	A			B2B			Black	Black	SC	350	125	660
700 x 42C	44-622	<b>Coyote</b>	120	Skinwall	TR	A			B2B			Black	Black	SC	470	125	610
700 x 42C	44-622	<b>Coyote</b>	60	Skinwall	TT	A						Black	Black	O	470	125	620
700 x 42C	44-622	<b>Coyote</b>	120	Skinwall	TR	A			B2B			Black	Grey	SC	470	125	610
700 x 40C	42-622	<b>Dingo</b>	120	Skinwall	TR	A			B2B			Black	Black	SC	500	125	580
700 x 40C	42-622	<b>Wolf</b>	120	Skinwall	TR	A			B2B			Black	Black	SC	500	120	570
700 x 40C	42-622	<b>Wolf</b>	60	Skinwall	TT	A						Black	Black	O	500	120	580
700 x 40C	42-622	<b>Wolf</b>	120	Skinwall	TR	A			B2B			Black	Grey	SC	500	120	570
700 x 38C	40-622	<b>Coyote</b>	120	Skinwall	TR	A			B2B			Black	Black	SC	550	118	560
700 x 38C	40-622	<b>Coyote</b>	120	Skinwall	TR	A			B2B			Black	Tan	SC	550	118	560
700 x 38C	40-622	<b>Coyote</b>	60	Skinwall	TT	A						Black	Black	O	550	118	550
700 x 35C	37-622	<b>Wolf</b>	120	Skinwall	TR	A			B2B			Black	Black	SC	600	115	540
700 x 35C	37-622	<b>Wolf</b>	120	Skinwall	TR	A			B2B			Black	Tan	SC	600	115	540
700 x 35C	37-622	<b>Wolf</b>	60	Skinwall	TT	A						Black	Black	O	600	115	530
700 x 28C	28-622	<b>Boa</b>	120	Skinwall	TR	A			B2B			Black	Black	SC	700	78	300
700 x 28C	28-622	<b>Boa</b>	60	Skinwall	TT	A						Black	Black	O	700	78	310
700 x 28C	28-622	<b>Taipan</b>	120	Skinwall	TR	A			B2B			Black	Black	SC	700	78	300
700 x 28C	28-622	<b>Taipan</b>	60	Skinwall	TT	A						Black	Black	O	700	78	310
700 x 25C	25-622	<b>Boa</b>	120	Skinwall	TR	A			B2B			Black	Black	SC	800	75	270
700 x 25C	25-622	<b>Boa</b>	60	Skinwall	TT	A						Black	Black	O	800	75	280
700 x 25C	25-622	<b>Taipan</b>	120	Skinwall	TR	A			B2B			Black	Black	SC	800	75	270
700 x 25C	25-622	<b>Taipan</b>	60	Skinwall	TT	A						Black	Black	O	800	75	280
28 x 2.10	54-622	<b>Bumblebee</b>	20	Full	TT	TW	eReady	HE			HiVis Reflex	Black	Black	O	380	125	1 320
28 x 2.10	54-622	<b>Bumblebee</b>	20	Full	TT	TW	eReady	HE			HiVis Reflex	Cream	Cream	C	380	125	1 320
26 x 2.00	52-559	<b>Hornet</b>	20	Full	TT	TW	eReady 5	RC			Black Neon	Black	Black	O	450	110	1 500
26 x 1.75 x 2	47-559	<b>Bumblebee</b>	20	Full	TT	TW	eReady	HE			HiVis Reflex	Black	Black	O	350	120	980
26 x 1.75 x 2	47-559	<b>Bumblebee</b>	20	Full	TT	TW	eReady	HE			HiVis Reflex	Cream	Cream	O	350	120	980
700 x 45C	47-622	<b>Rat</b>	20	Full	TT	TW	eReady	HE			HiVis Reflex	Black	Black	O	350	125	1 080
700 x 45C	47-622	<b>Jackal</b>	20	Full	TT	TW	eReady	HE			HiVis Reflex	Black	Black	O	350	125	1 080
700 x 45C	47-622	<b>Dingo</b>	20	Full	TT	TW	eReady	HE			HiVis Reflex	Black	Black	O	350	125	1 080
700 x 45C	47-622	<b>Bumblebee</b>	20	Full	TT	TW	eReady	HE			HiVis Reflex	Black	Black	O	350	125	1 080
700 x 45C	47-622	<b>Bumblebee</b>	20	Full	TT	TW	eReady	HE			HiVis Reflex	Cream	Cream	O	350	125	1 080
700 x 45C	47-622	<b>Fly</b>	20	Full	TT	TW	eReady	HE			HiVis Reflex	Black	Black	O	350	125	1 040
700 x 45C	47-622	<b>Fly</b>	20	Full	TT	TW	eReady	HE			Black Neon	Black	Black	O	350	125	1 050
700 x 40C	42-622	<b>Rat</b>	20	Full	TT	TW	eReady	HE			HiVis Reflex	Black	Black	O	520	115	970
700 x 40C	42-622	<b>Jackal</b>	20	Full	TT	TW	eReady	HE			HiVis Reflex	Black	Black	O	520	115	970
700 x 40C	42-622	<b>Dingo</b>	20	Full	TT	TW	eReady	HE			HiVis Reflex	Black	Black	O	520	115	980

SIZE	METRIC	PATTERN	TPI	SIDEWALL	TR/TT	BEAD	PROTECTED	PP MATERIAL	IMPACT PROTECTED	SIDEWALL REINFORCED	REFLECTIVE STRIPE	TREAD COLOR	SIDEWALL COLOR	SPECIAL COMPOUND	INFLATION (kPa)	LOAD (kg)	WEIGHT (g)
700 x 40C	40-622	<b>Fly</b>	20	Full	TT	TW	eReady	HE			HiVis Reflex	Black	Black	O	520	115	930
700 x 40C	40-622	<b>Fly</b>	20	Full	TT	TW	eReady	HE			Black Neon	Black	Black	O	520	115	940
700 x 35C	37-622	<b>Rat</b>	20	Full	TT	TW	eReady	HE			HiVis Reflex	Black	Black	O	520	110	780
700 x 35C	37-622	<b>Jackal</b>	20	Full	TT	TW	eReady	HE			HiVis Reflex	Black	Black	O	520	110	920
700 x 35C	37-622	<b>Dingo</b>	20	Full	TT	TW	eReady	HE			HiVis Reflex	Black	Black	O	520	110	900
700 x 35C	37-622	<b>Fly</b>	20	Full	TT	TW	eReady	HE			HiVis Reflex	Black	Black	O	520	110	890
700 x 35C	37-622	<b>Fly</b>	20	Full	TT	TW	eReady	HE			Black Neon	Black	Black	O	520	110	900
700 x 35C	37-622	<b>Fly</b>	60	Full	TT	TW	eReady 5	RC			HiVis Reflex	Black	Black	O	520	110	1080
700 x 32C	32-622	<b>Dingo</b>	20	Full	TT	TW	eReady	HE			HiVis Reflex	Black	Black	O	650	90	740
700 x 32C	32-622	<b>Fly</b>	20	Full	TT	TW	eReady	HE			HiVis Reflex	Black	Black	O	520	110	700
700 x 32C	32-622	<b>Fly</b>	20	Full	TT	TW	eReady	HE			Black Neon	Black	Black	O	520	110	710
700 x 32C	32-622	<b>Fly</b>	60	Full	TT	TW	eReady 5	RC			HiVis Reflex	Black	Black	O	520	110	850
700 x 28C	28-622	<b>Fly</b>	20	Full	TT	TW	eReady	HE			HiVis Reflex	Black	Black	O	520	110	620
700 x 28C	28-622	<b>Fly</b>	60	Full	TT	TW	eReady 5	RC			HiVis Reflex	Black	Black	O	520	110	740

TT → Tube type    TR → Tubeless Ready    A → Aramid bead    B2B → Bead-to-Bead impact damage guard    HE → Highly elastic compound    DC → Dual compound    AR → Aramid Reinforced Bead  
 SRC → Soft Race compound    RB → Radial belt    PF → Polyamid Fabric    SC → Silica compound    O → Optimal compound    C → Classic compound    TW → Twisted steel wire

### Casing Construction

- Race → Factory Race 120 TPI, super light, race grade casing, equipped with SRC compound
- Pro → Pro Race 120 TPI, bead-to-bead guarded, equipped with SRC compound
- No marking → 60 TPI light sports performance casing
- DH → Downhill reinforced dual 2 ply casing
- TR → Tubeless Ready casing
- A → Aramid 8x2 foldable bead
- AR → Aramid 10x2 reinforced foldable bead

### Application Specific Technology

- B2B → Bead-to-bead impact damage fabric reinforcement
- Apex → Gravity range bead-sidewall impact damage protection
- eReady → Extra 2mm compound gauge under-tread puncture guard
- eReady 5 → Extra 5mm compound gauge under-tread puncture guard
- HiVis Reflex → Reflective sidewall stripe
- BlackNeon → Reflective 10mm wide sidewall stripe nearly invisible at daylight



# zleen

## VALVE PRO



### Precision-Engineered Bicycle Tubeless Valves

*Fabricated with high-precision CNC machines, our tubeless valves deliver unmatched airtightness and durability. Made from premium 7075 aluminum, they are both lightweight and incredibly strong. Our unique anodizing process ensures a vibrant, fade-resistant finish, even under extreme conditions. With exclusive patents and cutting-edge technology, we lead the industry in innovation.*

*Plus, every valve undergoes a 100 % inspection before leaving the factory — a level of quality assurance others simply can't match.*

**Precision. Performance. Perfection.**

SIZE	BLACK	RED	BLUE	IRIDESCENT	SILVER	PINK	GOLD
40 mm	X	X	X	X	X	X	X
60 mm	X						



# zleen TUBES



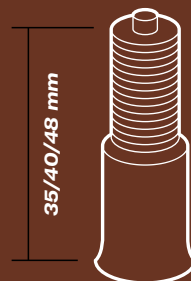
**Zleen performance bicycle tubes are made to last while saving weight and the environment. We quality check 100 % of them two times before releasing them for sale.**

**Sports riders rely on Zleen Tubes for their high durability, flexibility and long-term impact damage protection. Originated and engineered in Europe, manufactured in India, the Zleen Tubes are made of high-grade butyl rubber supporting sure grip of tires and absorbing shocks. On trails, rocks or cobble stones Zleen Tubes are designed to keep inflation pressure constant for maintenance-free riding. If punctured Zleen Tubes are easy to repair and reusable multiple times. No need to throw them away.**

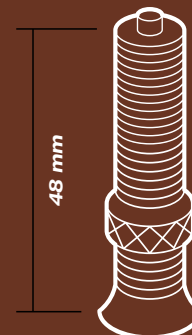
**Besides performance and durability, Zleen's tubes offering stands out for variety of valves and wide range of sizes including heavy-duty DH and Fat applications. From super lightweight road and MTB tubes to 10" kids stroller sizes. Zleen has your back covered.**

**Remember to check inflation pressure before setting out on every adventure. Beware of traffic and ride safely!**

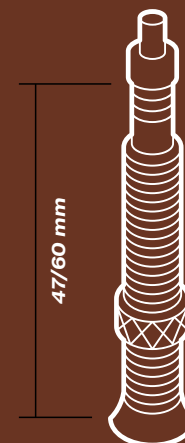
AV



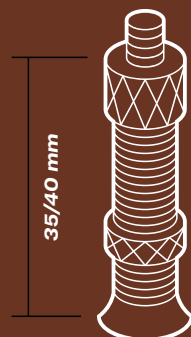
SV



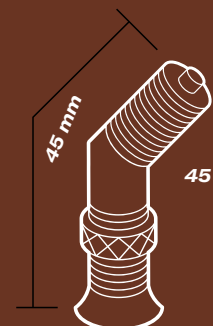
FV



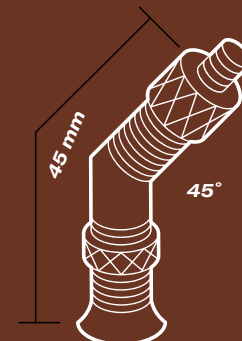
DV



SV 45/45



DV 45/45



# zleen TUBES

VALVE WEIGHTS (g)									
AV 35	AV 40	AV 48	DV 35	DV 40	FV 47	FV 60	SV 40	SV 45/45	DV 45/45
4	6	8	5	7	5	8	8	9	9

			VALVE / SIZE (mm)								
SIZE RANGE	SIZE	SIZE METRIC	AV		DV	FV		SV	FLAT WIDTH (mm)	GAUGE (mm)	WEIGHT WITHOUT VALVE (g)
Zleen tubes											
29"	29 x 1.95–2.50	50/64–622	40	48		47	60	48	50	0,90	221
	29 x 1.95–2.50 Light	50/64–622				47	60		50	0,60	147
	28/29 x 1.75–2.25	44/57–622	40	48		47	60	48	44	0,90	193
28"	28 x 1.25–1.75	32/44–622/635	40	48	40	47			38	0,90	166
	700 x 18/28C	18/28–622/635				47	60		24	1,00	101
27.5"	27.5 x 1.95–2.50	50/64–584	40	48		47	60	48	50	0,90	209
	27.5 x 1.95–2.50 Light	50/64–584				47	60		50	0,60	139
	27.5 x 1.75–2.25	44/57–584/597	40	48		47	60	48	44	0,90	182
	26 x 1_3/8	32/44–584/597	40		40				38	0,90	158
26"	26 x 1.75–2.25	44/57–559	40	48	40	47			44	0,90	175
	24 x 1_3/8	32/44–540/559	40		40				38	0,90	146
24"	24 x 1.75–2.25	44/57–507	40		40				44	0,90	161
	24 x 1-1 3/8	25/37-540/541	40					40	30	0,90	114
	28 x 1,00 Tubular	18/28 –622				47			24	0,80	80
	24 x 1.00	18/28–540/541	40					40	24	1,00	90
20"	20 x 1.75–2.25	44/57–406	40		40				44	0,90	131
18"	18 x 1.75–2.25	44/57–355	40		40				44	0,90	117
16"	16 x 1.75–2.25	44/57–305	40		40				44	0,90	101
14"	14 x 1.75–2.25	44/57–254/288	40		40				44	0,90	86
12,5"	12.5 x 1.75–2.25	44/57–203	35		35				44	0,90	71
10"	10 x 1.75–2.00	—			45/45			45/45	38	1,20	63
Zleen DH tubes											
29"	29 x 2.30–2.90	58/74–622	40			47			58	1,20	344
27.5"	27.5 x 2.30–2.90	58/74–584	40			47			58	1,20	326
Zleen tubes for fat tires											
29"	29 x 2.45–3.35	62/85–622	40					40	68	1,40	469
26"	26 x 3.50–4.00	89/100–559	40					40	100	1,40	659
	26 x 3.00–3.45	76/88–559	40					40	77	1,40	497
24"	24 x 3.50–4.00	89/100–507	40					40	100	1,40	598
	24 x 3.00–3.45	76/88–507	40					40	77	1,40	440
20"	20 x 3.50–4.00	89/100–406	40					40	100	1,40	501
	20 x 3.00–3.45	76/88–406	40					40	80	1,40	391







**Zleen Europe s.r.o.**  
**Antala Staška 2027/79**  
**140 00 Prague 4**  
**Czech Republic**  
**+420 242 443 422**  
**zleen.cares@zleen.online**  
**zleen.online**  
**instagram.com/zleen\_tires**  
**facebook.com/zleentires**